

## ◆◆ Blood Collection (Multi-Sample) Needles

1. Pen type blood collection needle:(type I)

- ◆ Latex Free
- ◆ Multi-sample needles permit several samples to be taken with a single puncture
- ◆ Sharp&smooth edges make penetration painless,easy connection to rubber stoppers

2. Pen type(flash back) blood collection needle(type II)

- ◆ Latex Free
- ◆ Multi-sample needles permit several samples to be taken with a single puncture
- ◆ Special design can observe the vein blood flash back.

3. Blood collection needle with scalp vein set (type III ),  
Blood Collection needle with hypodermic needle(type IV)

- ◆ Latex Free
- ◆ Soft and transparent tube can observe the vein blood flow clearly.
- ◆ Double wings make puncture safe.
- ◆ Different color wings means different size.

type I type II ◆◆ Color codes and specifications

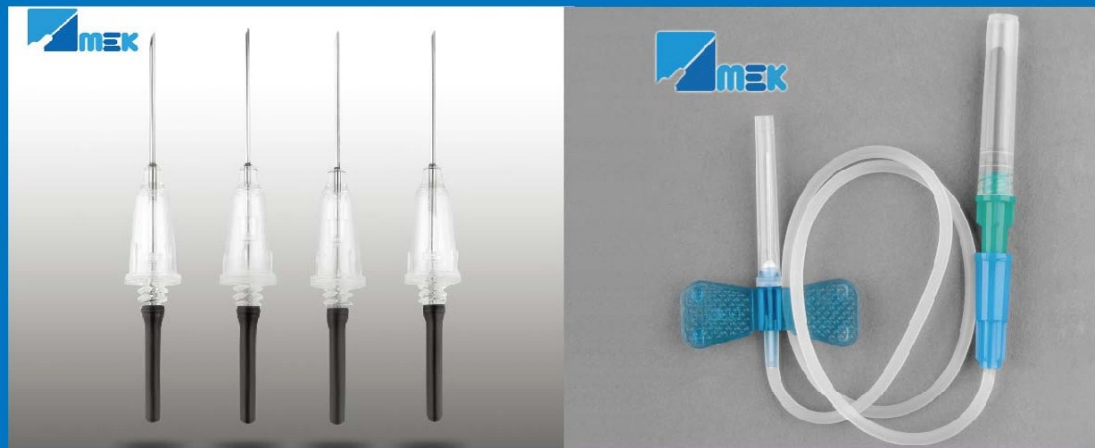
SIZE		COLOR	LENGTH			ID		BEVEL ANGLE		REF
OD (mm)	GAUGE	COLOR & CODE	20 3/4"	25 1"	38 1 1/2"	RW	TW	Long bevel	Short bevel	
0.60	23G	blue								01-101
0.70	22G	black								01-102
0.80	21G	green								01-103
0.90	20G	yellow								01-104
1.20	18G	pink								01-105

Remark:normal size in above table,we can also make special size as clients' request.

type III type IV ◆◆ Color codes and specifications

SIZE		COLOR	LENGTH				ID		BEVEL ANGLE		REF
OD (mm)	GAUGE	COLOR & CODE	16 5/8"	20 3/4"	25 1"	38 1 1/2"	RW	TW	Long bevel	Short bevel	
0.55	24G	purple									01-106
0.60	23G	blue									01-107
0.70	22G	black									01-108
0.80	21G	green									01-109
0.90	20G	yellow									01-110
0.10	19G	cream									01-111
1.20	18G	pink									01-112

Remark:normal size in above table,we can also make special size as clients' request.



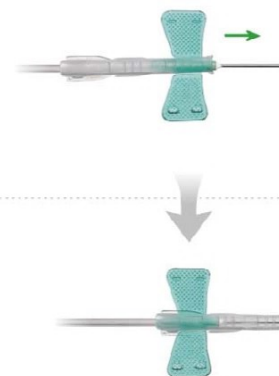
## ◆◆ Safety Blood Collection Set

- ◆ Safety blood collection set is a new designed safety products, which connect safety scalp vein set with blood collection components. After using, push the safety protector up to lock the needle tip in to the it, which will avoid hurting nurse or patients effectively. Both with holder and without holder is ok.

Types; Safety Blood Collection Set with holder and Safety Blood collection Set without holder



### OPERATION METHOD



1. Push the safety cover forward over the needle after using up

2. Make butterfly part totally lock into slot of safety device

### Safety Blood Collection Set

◆◆ Color codes and specifications

SIZE		COLOR	LENGTH	ID	BEVEL ANGLE		REF
OD (mm)	GAUGE	COLOR & CODE	20 3/4"	RW	TW	Long bevel	
0.55	25G	orange					SN-101
0.60	23G	blue					SN-102
0.70	22G	black					SN-103
0.80	21G	green					SN-104

Remark: normal size in above table, we can also make special size as clients' request.

### Safety Blood Collection Set with Holder

◆◆ Color codes and specifications

SIZE		COLOR	LENGTH	ID	BEVEL ANGLE		REF
OD (mm)	GAUGE	COLOR & CODE	20 3/4"	RW	TW	Long bevel	
0.55	25G	orange					SN-105
0.60	23G	blue					SN-106
0.70	22G	black					SN-107
0.80	21G	green					SN-108

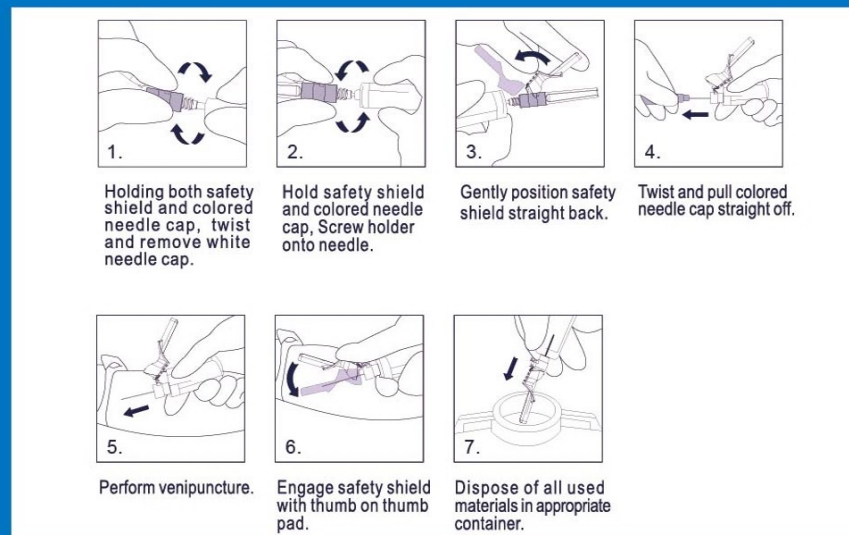
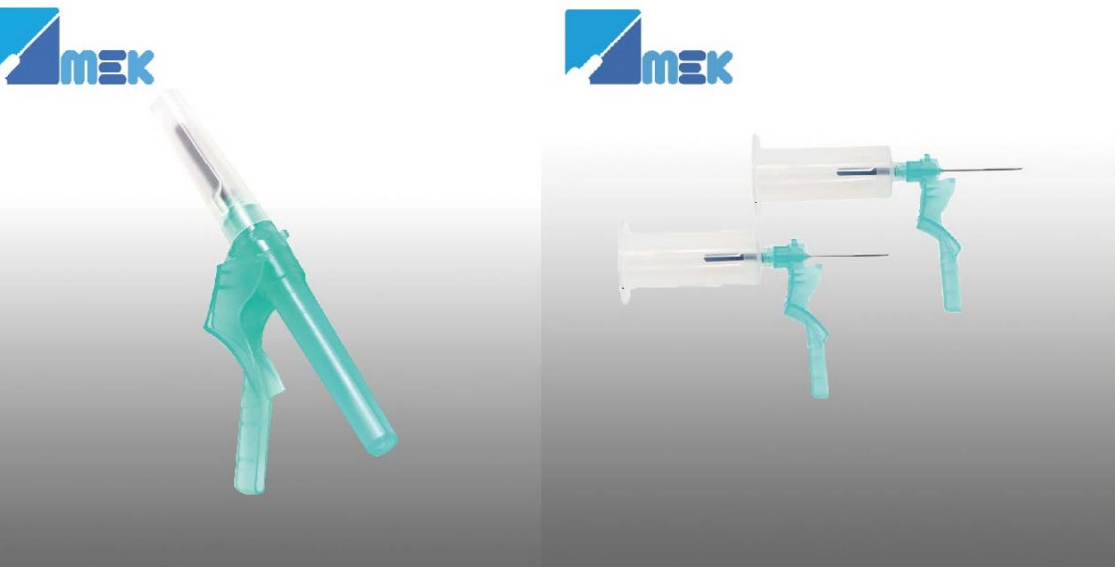
Remark: normal size in above table, we can also make special size as clients' request.

## Safety Blood Collection Needle

Safety Blood Collection Needle pen type, can be supplied with or without holder, the design of safe protector cap can shield the cannula after use, prevent needlepoint from stabbing nurse, patient or other people, which can effectively reduce infection. This kind of safety blood collection needle is a safe substitute of the general blood collection needle for clinical application.

## Intended Use

This kind of product which is used for blood collection is applicable for needle holder and vacuum tube for blood sample collection.



safety Blood Collection Needle

Color codes and specifications

OD (mm)	GAUGE	COLOR & CODE	LENGTH			ID		BEVEL ANGLE		REF
			20 3/4"	25 1"	38 1 1/2"	RW	TW	Long bevel	Short bevel	
0.60	23G	blue								SN-201
0.70	22G	black								SN-202
0.80	21G	green								SN-203
0.90	20G	yellow								SN-204
1.20	18G	pink								

Remark: normal size in above table, we can also make special size as clients' request.

safety Blood Collection Needle with holder

Color codes and specifications

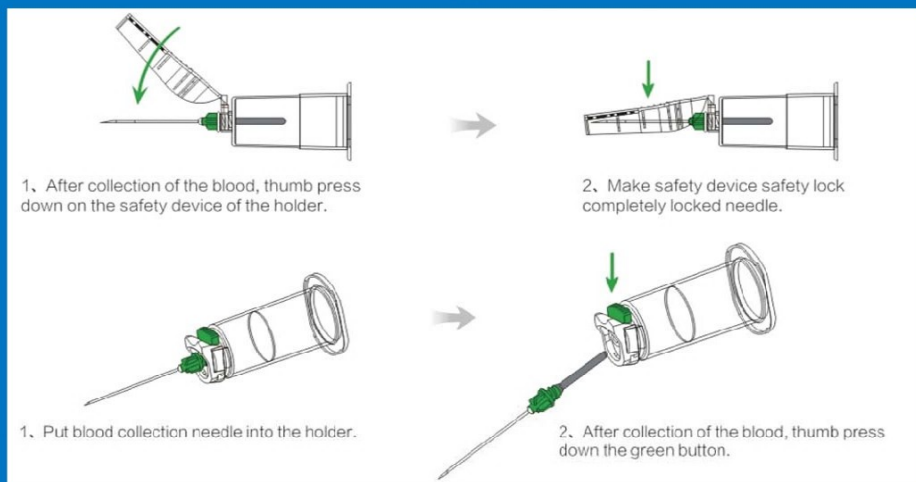
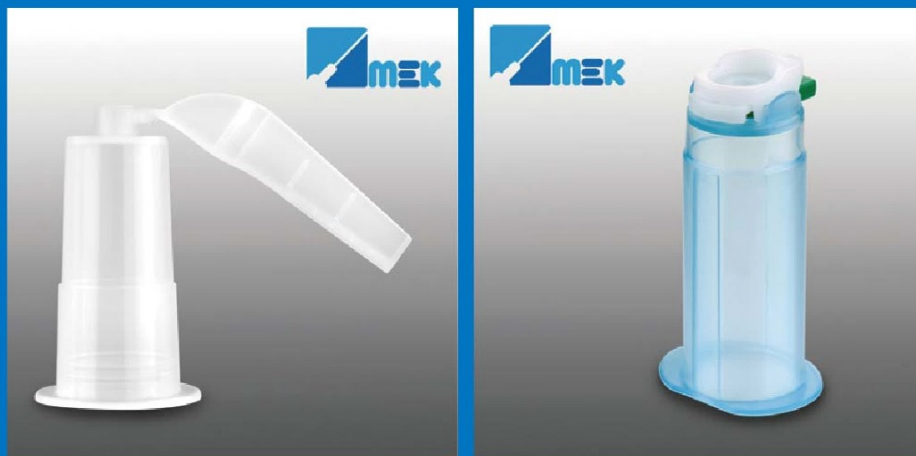
OD (mm)	GAUGE	COLOR & CODE	LENGTH			ID		BEVEL ANGLE		REF
			20 3/4"	25 1"	38 1 1/2"	RW	TW	Long bevel	Short bevel	
0.60	23G	blue								SN-206
0.70	22G	black								SN-207
0.80	21G	green								SN-208
0.90	20G	yellow								SN-209
1.20	18G	pink								SN-210

Remark: normal size in above table, we can also make special size as clients' request.



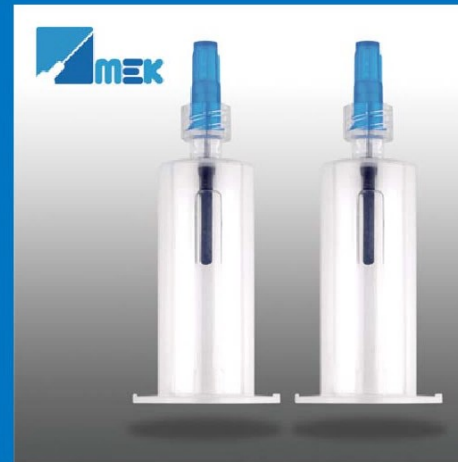
## ❖❖ Blood collection assembly Product Safety holder

◆ Safety holder is a new designed of safety product, can be used with pen type blood collection needle to collect blood samples. There are two types; Holder with safety sheath; quicke release holder. The design is aim to avoid nurse or patient injury efficiently.



## ❖❖ Holder with luer adapter

◆ There are three types: LH001, LH002 and LH003.



SIZE	REF	DIAGRAM
0.8 × 19	LH001	
0.9 × 19	LH002	
0.9 × 19	LH003	